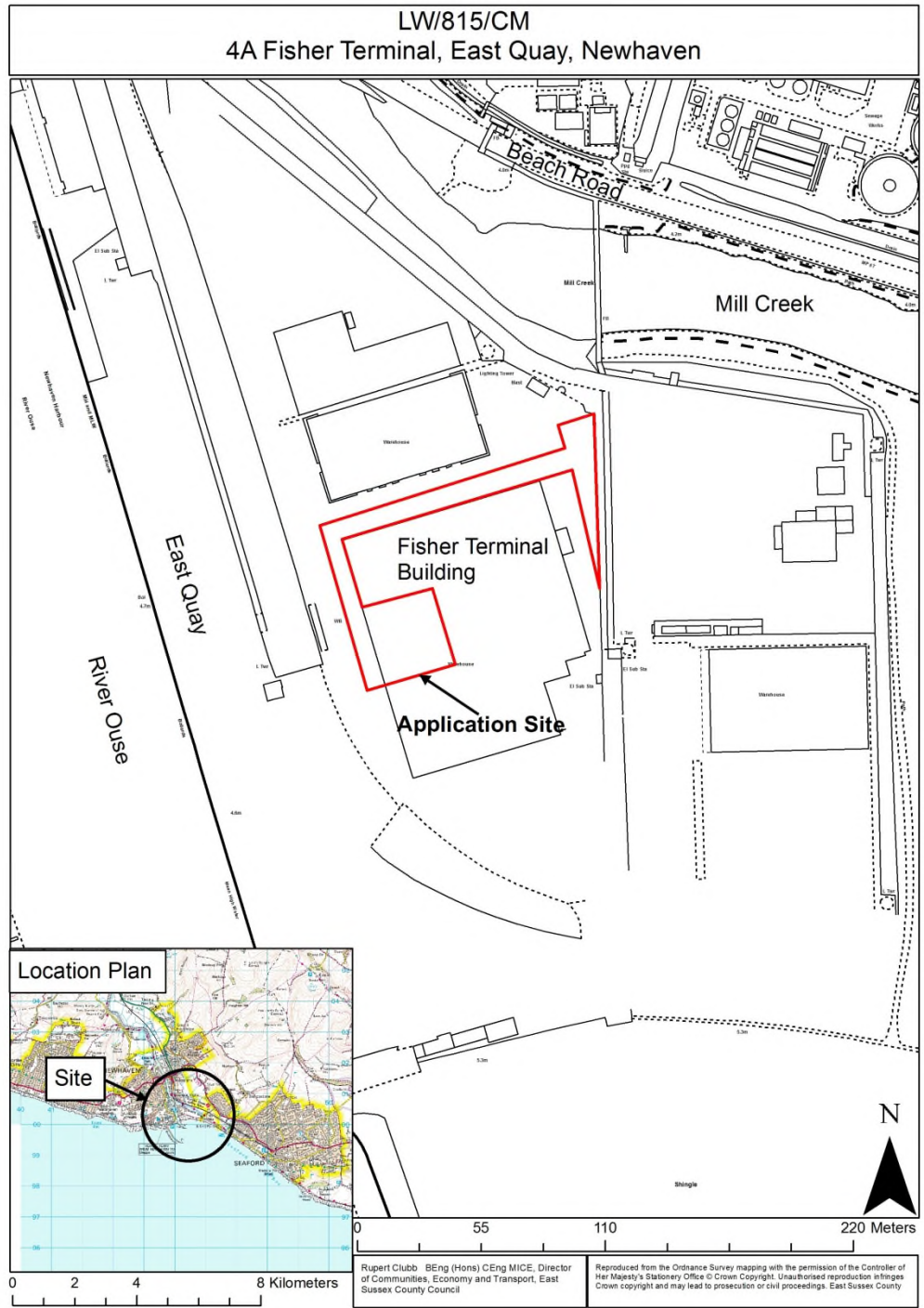


East Sussex County Council Planning Committee 16 January 2019

LW/815/CM

Proposed Installation & operation of energy conversion plant including receipt and processing of waste feedstock.

4A Fisher Terminal, East Quay, Newhaven, Newhaven Port,
BN9 0DA



LW/815/CM
4A Fisher Terminal, East Quay, Newhaven



0 55 110 220 Meters

Rupert Clubb BEng (Hons) CEng MICE, Director of Communities, Economy and Transport, East Sussex County Council

Reproduced from the Ordnance Survey mapping with the permission of the Controller of Her Majesty's Stationery Office © Crown Copyright. Unauthorised reproduction infringes Crown copyright and may lead to prosecution or civil proceedings. East Sussex County Council



Western elevation of Unit 4a



Rear of Fisher Terminal building on left side

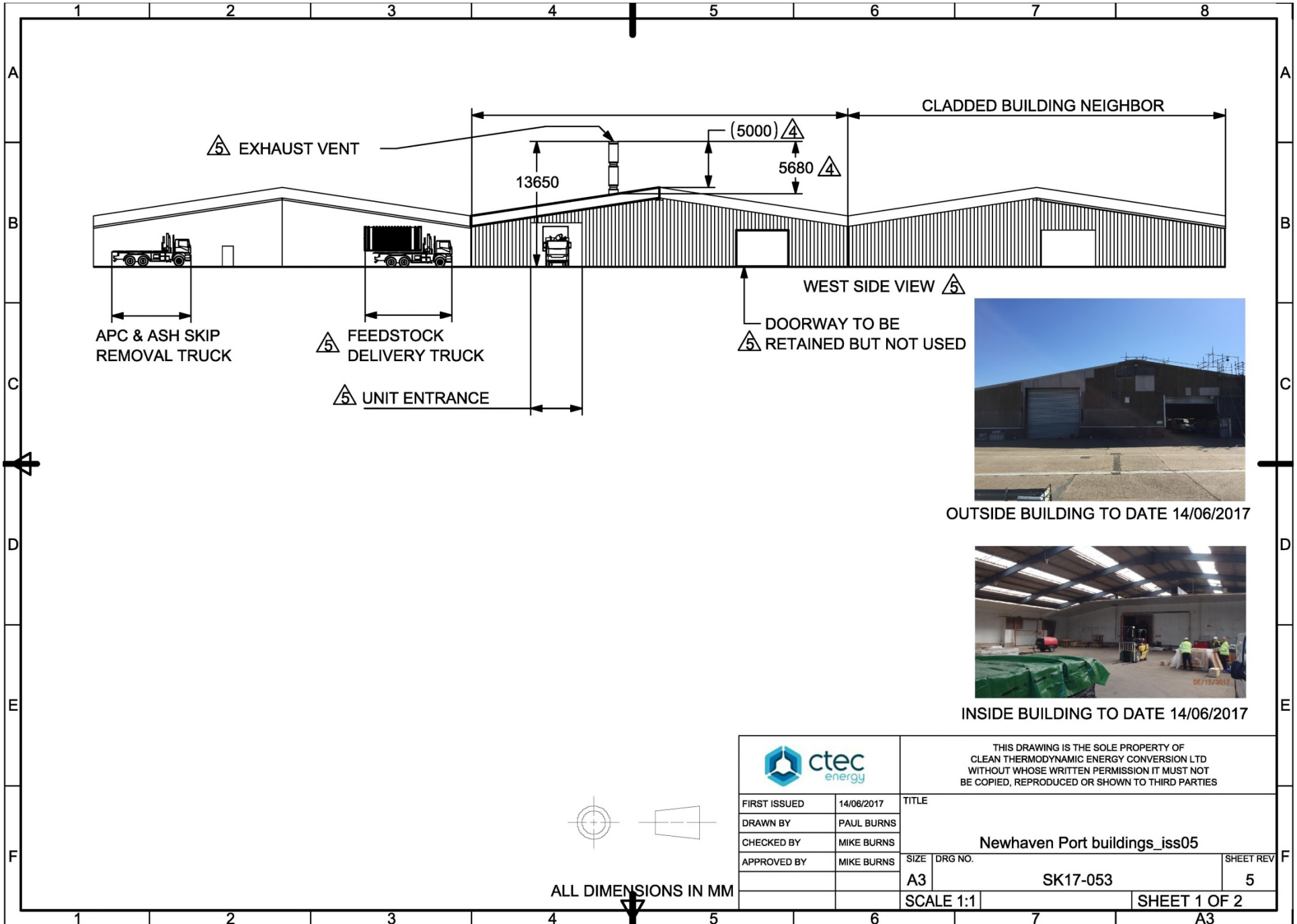


View north along East Quay with the Fisher Terminal building on right and Unit 4a in centre



SITE LOCATION PLAN
AREA 4 HA
SCALE 1:1250 on A4
CENTRE COORDINATES: 545192, 10048





OUTSIDE BUILDING TO DATE 14/06/2017

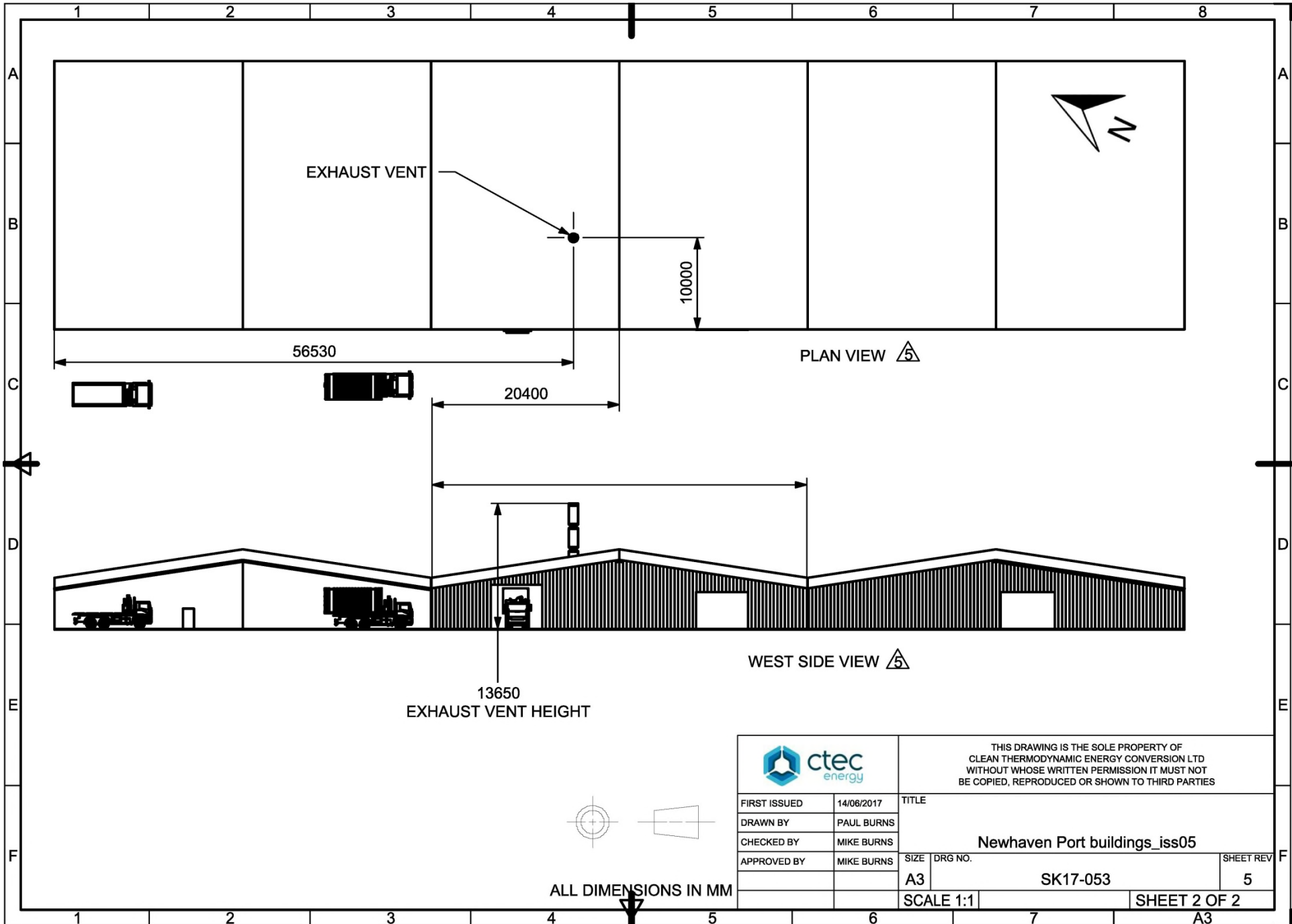


INSIDE BUILDING TO DATE 14/06/2017

		THIS DRAWING IS THE SOLE PROPERTY OF CLEAN THERMODYNAMIC ENERGY CONVERSION LTD WITHOUT WHOSE WRITTEN PERMISSION IT MUST NOT BE COPIED, REPRODUCED OR SHOWN TO THIRD PARTIES		
		TITLE Newhaven Port buildings_iss05		
FIRST ISSUED	14/06/2017	SIZE	DRG NO.	SHEET REV
DRAWN BY	PAUL BURNS	A3	SK17-053	5
CHECKED BY	MIKE BURNS	SCALE 1:1		
APPROVED BY	MIKE BURNS	SHEET 1 OF 2		



ALL DIMENSIONS IN MM



EXHAUST VENT

10000

56530

PLAN VIEW

20400

WEST SIDE VIEW

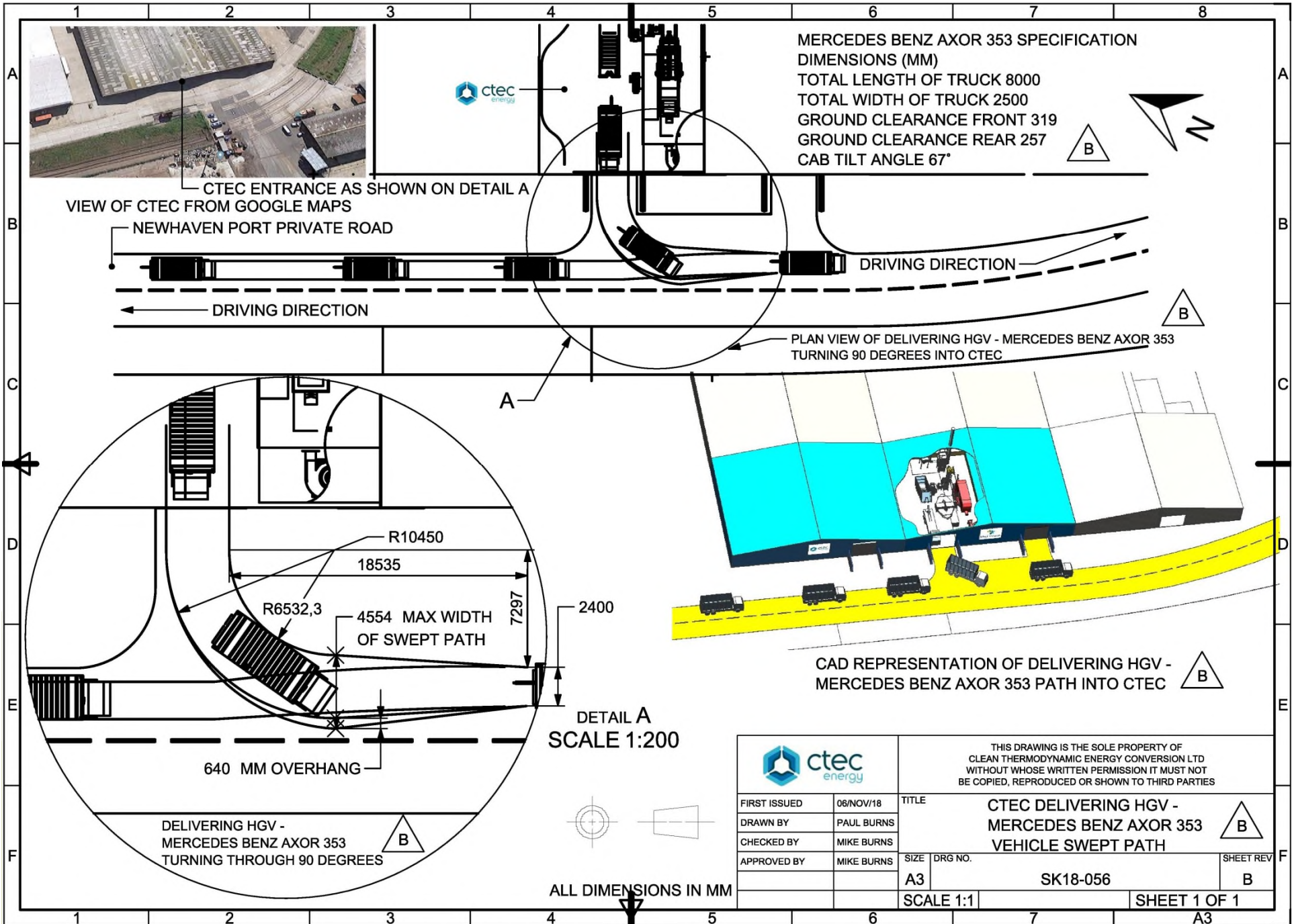
13650
EXHAUST VENT HEIGHT



ALL DIMENSIONS IN MM

		THIS DRAWING IS THE SOLE PROPERTY OF CLEAN THERMODYNAMIC ENERGY CONVERSION LTD WITHOUT WHOSE WRITTEN PERMISSION IT MUST NOT BE COPIED, REPRODUCED OR SHOWN TO THIRD PARTIES		
		TITLE Newhaven Port buildings_iss05		
FIRST ISSUED	14/06/2017	SIZE	DRG NO.	SHEET REV
DRAWN BY	PAUL BURNS	A3	SK17-053	5
CHECKED BY	MIKE BURNS	SCALE 1:1		
APPROVED BY	MIKE BURNS	SHEET 2 OF 2		

A3



MERCEDES BENZ AXOR 353 SPECIFICATION DIMENSIONS (MM)
 TOTAL LENGTH OF TRUCK 8000
 TOTAL WIDTH OF TRUCK 2500
 GROUND CLEARANCE FRONT 319
 GROUND CLEARANCE REAR 257
 CAB TILT ANGLE 67°

CTEC ENTRANCE AS SHOWN ON DETAIL A
 VIEW OF CTEC FROM GOOGLE MAPS

NEWHAVEN PORT PRIVATE ROAD

DRIVING DIRECTION

DRIVING DIRECTION

PLAN VIEW OF DELIVERING HGV - MERCEDES BENZ AXOR 353
 TURNING 90 DEGREES INTO CTEC

R10450
 18535
 R6532,3
 4554 MAX WIDTH OF SWEEP PATH
 7297

2400

640 MM OVERHANG

DETAIL A
 SCALE 1:200

DELIVERING HGV -
 MERCEDES BENZ AXOR 353
 TURNING THROUGH 90 DEGREES

CAD REPRESENTATION OF DELIVERING HGV -
 MERCEDES BENZ AXOR 353 PATH INTO CTEC

		THIS DRAWING IS THE SOLE PROPERTY OF CLEAN THERMODYNAMIC ENERGY CONVERSION LTD WITHOUT WHOSE WRITTEN PERMISSION IT MUST NOT BE COPIED, REPRODUCED OR SHOWN TO THIRD PARTIES	
FIRST ISSUED	06/NOV/18	TITLE	
DRAWN BY	PAUL BURNS	CTEC DELIVERING HGV - MERCEDES BENZ AXOR 353	
CHECKED BY	MIKE BURNS	VEHICLE SWEEP PATH	
APPROVED BY	MIKE BURNS	SIZE	DRG NO.
		A3	SK18-056
		SCALE 1:1	SHEET 1 OF 1

ALL DIMENSIONS IN MM

LW/815/CM

Proposed Installation & operation of energy conversion plant including receipt and processing of waste feedstock.

4A Fisher Terminal, East Quay, Newhaven, Newhaven Port,
BN9 0DA